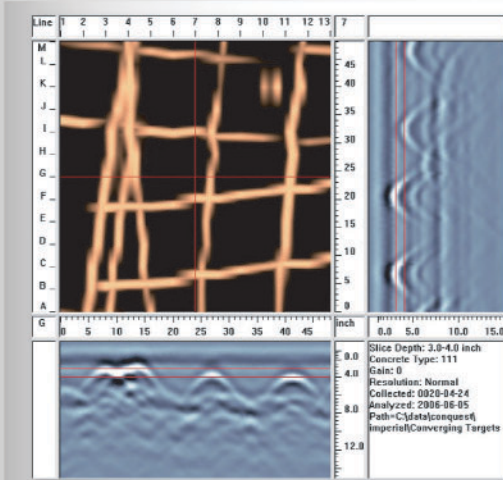


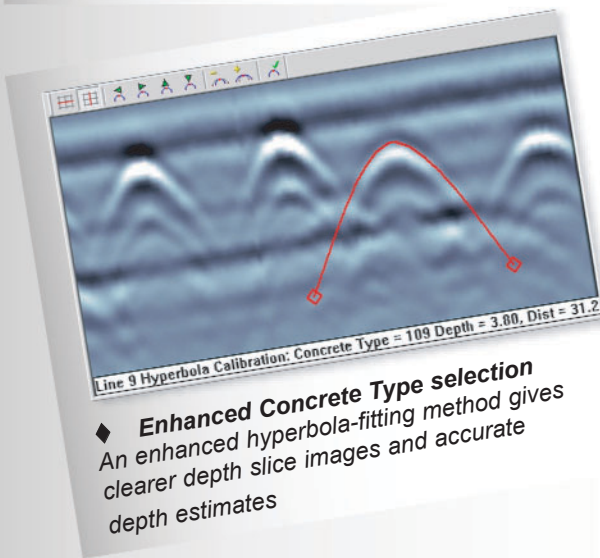
ConquestView software generates depth slices and cross-sectional images of concrete structures on a PC.

Designed for advanced analysis and report generation, ConquestView enables reprocessing, printing and archiving of Conquest data.

ConquestView many benefits include:



◆ **Faster depth slicing and section viewing**  
Rapid scrolling through depth slice and cross section images provides "animation" for easier data interpretation



◆ **Enhanced Concrete Type selection**  
An enhanced hyperbola-fitting method gives clearer depth slice images and accurate depth estimates

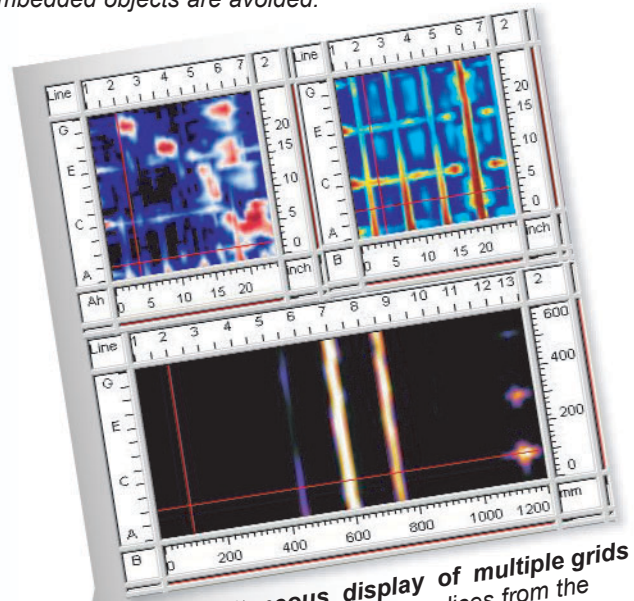
◆ **Easy determination of embedded object position**  
The position, depth or separation of objects is readily obtained using the continuously updated cursor location and the Measure tool

◆ **Rectangular or partial grid analysis**  
Provides more grid size options and adds tremendous flexibility for areas with difficult access where complete grid collection is not possible

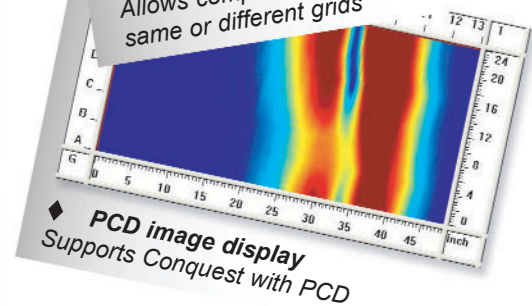
◆ **Variable depth window selection**  
Enables increased visibility of targets, by limiting depth slice and cross-section images to a desired range. This feature is used to "zoom" in and out of cross-section images

◆ **Contrast and Sensitivity adjustment**  
Allows image enhancement and viewing subtle targets

◆ **Upgraded drill locator**  
Proposed drill hole is placed on depth slice and/or PCD images. Scrolling through the images ensures embedded objects are avoided.



◆ **Simultaneous display of multiple grids**  
Allows comparison of depth slices from the same or different grids



◆ **PCD image display**  
Supports Conquest with PCD

A variety of color maps for both the depth slice, PCD and cross-section images are available to enhance and display features of interest. Images can be printed, exported as graphics image files (BMP, JPG, TIFF, GIF and PNG) or saved to the "clipboard" for easy insertion into reports.